



Vol. LX

January, 1982

No. 3

# The MacArthur Corridor



General Douglas A. MacArthur was accorded yet another unique honor when an 80-foot-long corridor in the Pentagon was dedicated to his memory in ceremonies that included President and Mrs. Reagan, Secretary and Mrs. Weinberger, and Mrs. MacArthur. Only four other five-star generals—George C. Marshall, Dwight D. Eisenhower, Omar N. Bradley and Henry H. Arnold—have been so honored.

The military's top brass, including the joint chiefs of staff, looked on during an outdoor ceremony with military pomp under bright skies.

The opening of the corridor culminated an effort to honor the general that was started by Norfolk's MacArthur Memorial Foundation. But Pentagon officials said that the former Secretary of Defense, Harold Brown, balked at naming a corridor for MacArthur because the general had been dismissed from his command during the Korean War for what President Truman considered insubordination.

Weinburger, who served under MacArthur during the World War II Pacific Campaign, arranged the \$150,000 memorial, the officials said. Reagan offered highlights of MacArthur's career and used the occasion to remind the nation that "in war, indeed, there can be no substitute for victory."

The President said the corridor would be an inspiration to a new generation of officers because it honored "an unflinching idealist, an authentic American hero."

"Really, it's hard for me to express what's in my heart," Mrs. MacArthur said in a brief address. "I just know what it would mean to him. From the bottom of my heart I thank you, and for my General."

After the out-door ceremony, guests who included former Norfolk Mayor Roy B. Martin, Jr., representing the MacArthur Foundation, filed into the Pentagon for a ribbon-cutting ceremony opening the corridor. An archway leading to the corridor carries MacArthur's now famous motto, "duty, honor, country," and on the corridor walls are glass-enclosed cases containing pictures, uniforms, medals and publications tracing MacArthur's life from his formative years on the American frontier to his death at 84 on April 5, 1964.

Security was tight during the ceremony, with uniformed federal policemen ringing the Pentagon grounds while others scrutinized the crowd of about 1,000 from a rooftop of the nation's military headquarters. There were no incidents.

## President's Message



Here in Illinois it is getting cold and snow flakes have introduced themselves already in November. This reminds me the year '1981' is drawing to a close and '1982' will soon be upon us. "1982 - Our Big Year in Tulsa." Again, I want to stress the importance of our Reunion and dedication of the Rainbow Memorial. Let us break all records of attendance and enjoy fellowship to the highest. I'm asking each and every one to contact at least one person, to invite and remind them of our great event. Let's all pull together on this one and see what a huge participation we can come up with. Reunion Chairman John George has assured us a good time, and Foundation President, Ted Johnson and his committee are staying on top of the project to make sure it is ready on our "Special Day."

Jane and I visited the site on our way to the Texas Chapter meeting. There, we happened to run into the Director of the Park and he went with us up to the highest point, overlooking the Cookson Hills area. He assured us of its' completion and flowers blooming in July.

On to Fort Worth we went - found that red carpet at the Stubbs Ranch. Among the flags waving and the red table cloths, we enjoyed food and refreshments and hospitality to the fullest. Enjoyed a successful meeting - confirming the 1983 Reunion in Dallas. What a fine turnout of the Texas Chapter, and honored by the presence of our National Auxiliary President, Jean Kemmerer and National Secretary Peg Keating. I want to add another thanks to our host and hostess for their invitation and warm welcome.

We returned home with a wonderful feeling in Rainbow comradeship. After resting a couple of weeks, we were "on the road again," to Birmingham, Alabama. detoured by way of Atlanta, GA, to spend a couple of days with our son. Arrived in Alabama on Tuesday about noon and was greeted by William Barton at the hotel. As a special guest to the largest Veterans Day Parade in the world, it was one of the highlights of my life. I will have to give you all the details at our next get-together.

(continued on page 2)



**THE RAINBOW REVEILLE**  
Official Publication of the  
RAINBOW Division Veterans

**Founder - Permanent Honorary President:**  
General of the Army  
Douglas MacArthur (Dec)

**Permanent Honorary Presidents:**  
Major General Harry J. Collins (Dec)  
General Henri Gouraud (Dec)  
Brigadier General Henning Linden

**Honorary President:**  
John George, Jr.

**PRESIDENT:** Garnett H. Jones  
1129 West Governor Street  
Springfield, IL 62794

**VICE PRESIDENTS:**  
Lowell W. McMillen, 1545 Dodd Road  
Niles, MI 49120 (North Region)  
R. Earl Kerns  
501 Virginia Ave.  
Plant City, FL 33564 (South Region)  
Philip F. Trout  
4121 8th Avenue  
Tempe, PA 19560 (East Region)  
Paul A. Younker  
312 Live Oak St., Apt. 2  
San Gabriel, CA 91776 (West Region)  
Gerald F. Maple  
401 West 19th Street  
Nelson, NE 68706 (Central Region)

**SECRETARY:**  
Mrs. Peg Keating  
505 Terrell Road  
San Antonio, TX 78209

**TREASURER:**  
Jon Janosik  
3389 Kingston Lane  
Youngstown, OH 44511

**CHAPLAIN:**  
Rev. Robert F. Weiss, S.J.  
5225 Troost Avenue  
Kansas City, MO 63110

**MEMORIALS:**  
Wm. R. Barton  
1033 White Oak Avenue, S.W.  
Atlanta, GA 30310

**HISTORIAN:**  
Kenneth A. Sutherland  
615 West "H" Street  
Ontario, CA 91762

**JUDGE ADVOCATE:**  
Lloyd H. Matson  
96 South Willard St.  
Burlington, VT 05401

**SERGEANT AT ARMS:**  
Charles Ferranti  
115 Palmetto Bluff Dr.  
Charleston Hills, SC 29405

**REVEILLE EDITOR:**  
Mertlin L. Davis  
751 Dry Creek Road  
Monterey, CA 93940

**PUBLISHING EDITOR:**  
Hugo E. Grimm  
#1 Community Federal Center  
St. Louis, MO 63131

**MEMBERSHIP CHAIRMAN:**  
Dixon Rogers  
Park Road  
Yafayette, MO 65248

**LIAISON OFFICER:**  
Charles B. Sayers, Jr.  
P.O. Box 125  
Blacksburg, VA 24060

**REVEILLE CHAIRMAN:**  
Horace Rose  
9756 Forestridge Drive  
Dallas, TX 75238

**1982 REUNION CHAIRMAN:**  
John George, Jr.  
4941 South Detroit  
Tulsa, OK 74105

Vol. LX January, 1982 No. 3

The RAINBOW REVEILLE Published Sep-  
tember, November, January, March, May and  
June for/by members of the Rainbow Division  
Veterans Association.  
Hugo E. Grimm  
#1 Community Federal Center  
St. Louis, MO 63131  
2nd Class postage paid at St. Louis, MO 63131  
Subscription \$6.00

**SEND REVEILLE ITEMS TO:**

Martin L. Davis, Editor  
751 Dry Creek Road  
Monterey, CA 93940

**SEND DUES REMITTANCE  
SHEETS AND MEMORIAL FORMS TO:**

Mrs. Peg Keating, Secretary  
505 Terrell Road  
San Antonio, TX 78209

**SEND CHANGE OF  
ADDRESS TO:**

Hugo E. Grimm, Publishing Editor  
#1 Community Federal Center  
St. Louis, MO 63131

**DEADLINES FOR COPY:**

March Issue Feb 1, 1982  
May Issue Apr 1, 1982  
June Issue May 1, 1982

## President's Message

(continued from page 1)

Alabama on Tuesday about noon and was greeted by William Barton at the hotel. As a special guest to the largest Veterans Day Parade in the world, it was one of the highlights of my life. I will have to give you all the details at our next get-together.

But let me say this, not everyone can have the honor of having the first runner-up to the Miss America Contest as their luncheon partner. Imagine trying to eat, stay calm with Miss Alabama, the Secretary of the Army and Douglas Fairbanks, Jr., all at your left. The parade was massive and made you proud to be an American War Veteran.

Thanks to Jim Mize, we found our way to the home of Mrs. Ragsdale and spent an eventful hour with her. I appreciate all the help and favors shown us on this memorial outing.

Back to Springfield and getting ready for Thanksgiving and Christmas Holidays. Wishing all the very best. See you in Tampa.

- "Buck"

## South Carolina

The South Carolina Chapter met jointly with the Auxiliary for our annual affair at the Ramada Inn, West Columbia, SC, on November 8th, at noon. It was our smallest meeting with four present, two from each World War. We had a social period, a very short business meeting, lunch and adjourned around three p.m.

We reelected our officers: Cornelius A. Duffort, Sr., President; Willis S. Gardner, Vice President; and W.W. Muckenfuss, Jr., Secretary-Treasurer.

- W.W. Muckenfuss.

## Chester J. Mann

Chester J. Mann, 222d Infantry, former Secretary of the Rainbow Division Memorial Foundation, passed over the Rainbow on Wednesday, October 14, 1981, at Marion General Hospital, Fairmount, Indiana, after an extended illness. He was a member of the Fairmount Veterans of Foreign Wars, the Grant County 40 & 8 Club and the Indianapolis Chapter of the Rainbow Division Veterans Association.

He was past commander of the Fairmount American Legion Post 313, and has served on the Fairmount School Board, the Grant County Health Board and the Grant County Sheriff's Merit Board.

He is survived by his widow, a son and daughter, two brothers, two sisters and two grandchildren.

## Prayer

All-powerful and ever living God, Father of us all, help us to begin the New Year that faces us with courage and confidence and hope. We know that the love You offer to us always exceeds by far the greatest expression of our human longing, for You are so much greater than the human heart that Your love surpasses all our comprehension. During this year direct each thought, each word, each effort of our life in such a way that the limits of our faults and weaknesses may not obscure the vision of Your glory and the happiness You have prepared for us nor keep us from the peace and joy You have promised us. During this year may Your love overflow from us into the lives of all those whose paths cross ours.

This we ask in Jesus' name. Amen

- Rev. Robert F. Weiss, S.J., National Chaplain

## Peace Through Strength

During the Reading Reunion, 1981, a Resolution, introduced by Carlyle Woelfer, President, 222d Infantry Chapter, was adopted by the Reunion and copies forwarded to the President and to top members of the Senate and House of Representatives by Herb Butt, Chairman of the Resolutions Committee. The Resolution urged the President and Congress to adopt a National Strategy of Strength to insure peace, and listed nine principles for achieving this aim.

Herb Butt received the following acknowledgement:

"Thank you for your letter of September 18, enclosing a copy of a resolution adopted by the National Association of Rainbow Division Veterans at its 63rd Reunion, urging the adoption of a national strategy of strength to insure peace.

"I am very pleased, but hardly surprised, to learn of your organization's clear and comprehensive statement supporting a stronger national defense posture. As you are aware, the sentiments and objectives set forth in your resolution have long been shared by this committee and have been incorporated in this year's defense authorization legislation. Ably assisted by the seasonal counsel and traditional support of the Rainbow Division Veterans, we shall continue to work toward the achievement of those goals in the years ahead.

"Sincerely, Melvin Price, Chairman, Committee on Armed Services, U.S. House of Representatives."

The Director of Correspondence, The White House, and Ike Skelton, Member of Congress, 4th District, acknowledged receipt of the resolution but made no comments on its contents.



## Holocaust Council

### J. Wm. Keithan, 232d Infantry

On October 26-28, 1981, an International Liberators Conference on the United States Holocaust Memorial Council was held at the United States State Department in Washington, D.C.

The conference was sponsored by the United States Holocaust Memorial Council. The purpose was both to perpetuate the memory of the millions who died in Hitler's death camps and to honor the liberators of those camps.

There were representatives from the United States, Belgium, Canada, Czechoslovakia, Denmark, France, Great Britain, the Jewish Brigade of World War II, the Netherlands, New Zealand, Norway, Poland, Yugoslavia and the USSR.

There were plenary sessions dealing with eye witness accounts and then panel discussions of war correspondence, medical personnel, military historians, chaplains, resistance, war crime trials, uprisings, survivors and a final panel discussion titled "Discovering the Final Solution," which was indeed an indictment against the world leaders of the time who apparently knew what was going on in Hitler's death camps, but did not take appropriate action to mitigate this horror.

Representing the liberators were one or more representatives from each of the states in the United States, and although I can't identify all of the Rainbow men in attendance, here are the names of some I was able to make contact with:

Henry DeJarnette, Cedar Rapids, 3rd Platoon, A - 222d Infantry.

Ralph Rundquist, Assaria, KS, 222d Infantry.

Jerry Smalley, Oklahoma City, OK, 142d Combat Engineers.

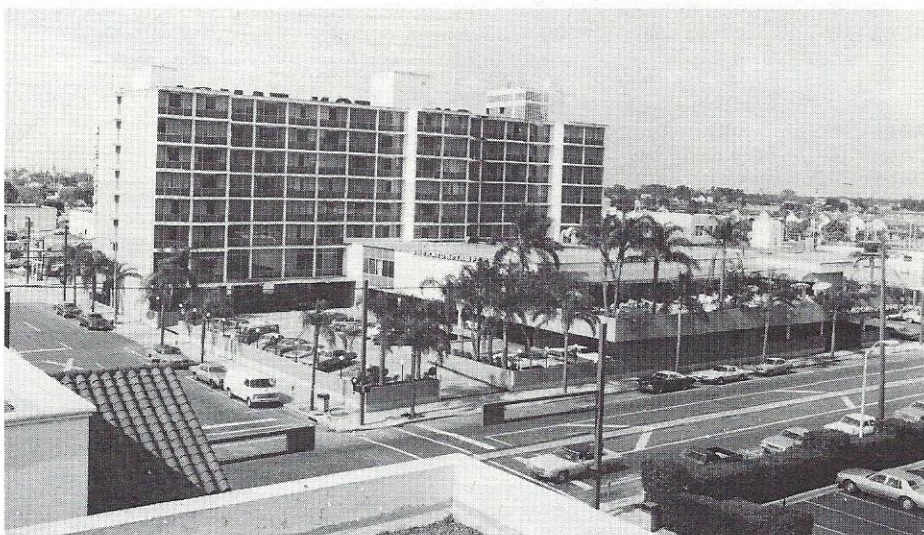
Rabbi Eli A. Bohnen, Providence, RI, Asst Div Chaplain, 42nd Division.

J. Wm. Keithan, 232d Infantry.

The conference was a fantastic experience in that it revived many long dormant memories of one of the world's horrible crimes against mankind. It was an extremely moving and emotional experience and brings to the forefront that all of us who participated should do everything that is humanly possible to prevent a recurrence.

(EDITOR - We received numerous news clippings from all over the nation, some of interviews with persons who had been invited to attend the meeting, and others documenting the events of the meeting. It is regrettable we can't find space for all the articles, but apparently the Holocaust Council meeting was widely reported through the nation's media.)

## MidYear Reunion Hotel



Get packed and head South for the Land of Sunshine and your Annual Midyear Reunion. This will be held on February 26 and 27, 1982, at the Sheraton-Tampa, 515 E. Cass Street, Tampa, Florida. Room rates are \$36.00 single and \$43.00 double; one night's deposit is required to confirm your reservation. Room reservations must be made by January 26, 1982. These rates prevail before and after the Reunion. Please be certain to mention you are with the 42nd Rainbow Reunion.

Those arriving by plane, call for the limo from the airport and the courtesy car will pick you up.

Also, send advance registration of \$25.00 per person attending to R. E. Kerns, Treasurer, 501 E. Virginia Avenue, Plant City, FL 33566. The Rocking Chair Chapter is ready and everything is all set, so come on down y'all to Land of Sunshine, the Midyear Reunion and all of your old Army buddies.

— R. E. Kerns, Jr.

## MO-KAN Memorial

You should have been with us!

It is with great pleasure that we report that the MO-KAN Chapter, RDVA, again honored those who have "passed over the Rainbow." Veterans Day Memorial Services—the Fourth Memorial at Rockhurst College and the third with Father Bob Weiss, National Chaplain, conducting the service—was held at 11:00 o'clock on November 11, 1981.

Naturally we tend to brag, but also admit to being a little in awe of the PNP's—both National and Auxiliary—that attended. We had the Hugo Grimm's, Edna Teagarden and Redcap Earl and John George and Lorena. The National VP for our Region, Gerry Maple, and wife were a little late on Tuesday evening, but they made it. Roger Knowles and Frances from Lincoln, Nebraska, were also with us. We had five states represented.

It pays to have the President of a College in your organization. Assisting Father Weiss in the Memorial Service was the Rockhurst Choir, that took time between classes, and three guitarists from the Music Department accompanying them. The MO-KAN Chaplain of many years, Rhea Findley, read "Flanders Field." This most inspiring and beautiful Service was followed by a very delicious dinner, not a lunch, in the Student Union, set up with six tables with six Veterans, wives or widows at each. All tables were graced with floral Rainbow centerpieces. Five WW I veterans and wives were with us.

Last year Dixon Rogers prepared the main part of the dinner program in which he outlined the achievements of Rainbow WW I. This year, he again researched and produced; but this time—WW II accomplishments. Those of you who have not had the privilege to hear or to read these programs by Dixon should get with it. Very noteworthy!

Naturally, all good things must end, and the Veteran's Day activities came to an end for 1981. We will again plan to hold Veteran's Day Memorial Day Service, "11 - 11 - 11" in 1982. Why not schedule your time accordingly? Some of us still work but take the time to pay tribute.

Why not join us?

— Herb Butt



## Texas Kickoff



**TIME:** Saturday 26 September; **PLACE:** the ranch home of P.N.P. Johnnie Stubbs and wife Verna. The ranch is located on the far west side of Ft. Worth.

Most of us arrived early (before noon). After a hearty Texas Welcome, we were offered a wide choice of whistle-wetters, expertly mixed and served by Clovis Brakebill.

The final count was 35, including guests. Special honored guests included National President "Buck" Jones and wife Jane; Auxiliary President Jean Kemmerer; Secretary Peg Keating; and P.N.P. John George and wife Lorena. First timers—recent Texas recruits: Tom Owens (M-232) and wife Betty; and John W. Sterling (A-242) and wife Lucile.

All enjoyed the Rainbow fellowship and a wonderful time in general (with or without the whistle-wetters.) But, when the dinner bell sounded there was a rush to line up for chow (just like old times.) It was served chuck-wagon style, more politely called buffet style. And what chow it was! Served in the yard under giant shade trees on tables bedecked in red-check cloths. Nobody went away hungry, that's for sure.

After lunch, the men held their meeting outdoors and the ladies met indoors. Newly elected Chapter President Jess Harry presided, and at precisely 2:30 p.m. declared the meeting open to transact business.

The main subject discussed was the projected 1983 National Reunion in Dallas, as reported in the September REVEILLE. Without going into detail, but not without some arm-twisting, the result was a favorable vote to confirm Dallas as the site of the 1983 Reunion with Clovis Brakebill as Reunion Chairman. Thanks to president "Buck" Jones and P.N.P. John George for helping us reach this decision. Details will follow in future issues of the REVEILLE.

Like all good things, we had to break it up and depart for our respective homes, but not before giving a big thanks to the Stubbs for their gracious hospitality and to our National officers for honoring us with their presence.

— Horace Rose, Scribe.

## California Guard

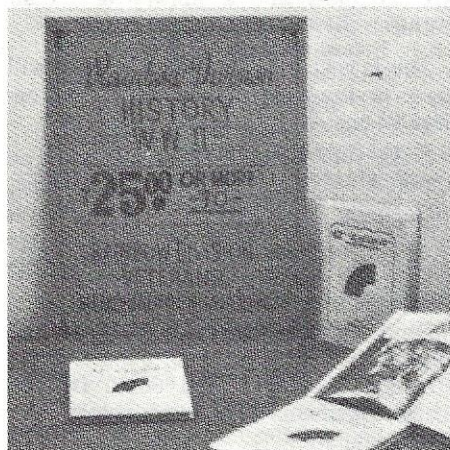
The Great State of California has spent something in the neighborhood of \$64 million just to bring the interior of its state Capitol back more or less to its original configuration. That makes news, the kind reporters delight in.

But most likely the news hounds will miss completely the fact that on display in the Rotunda of the Capitol, as reported by LTC Wm. G. Hamilton, Historical Officer of the California National Guard, are the National Colors, Regimental Colors and the Guidons of Companies D and E of the 117th Engineer Regiment of the Rainbow Division. The F Company Guidon was deposited with the Liberty Memorial in Kansas City many years ago, and the Liberty folks recently reported that precious piece of bunting has been lost. However, a substitute Company F Guidon will be made and added to the display in the very near future, aided by a contribution by our National Historian.

We are sure that California WWI vets still alive and kicking, particularly those who served in the 2nd Battalion of the Engineers, will appreciate the fact that the items mentioned as being on display have been recently restored by the Ms. Pat Reeves and Sharon Short, Textile Conservators in Los Angeles.

Col. Hamilton, in a telephone conversation with your National Historian last September 8th, told of the very destructive fire on December 24, 1972, that entirely gutted the headquarters of the Guard's Reference Library in Sacramento. Luckily, most of Rainbow's contributions were at other locations, such as the Rotunda of the Capitol Building and at the Museum at Camp San Luis Obispo. The Colonel also told of Governor Brown having signed, last October, a bill authorizing the Adjutant General to have a State Military Museum system and Research Center, to be separate and distinct from the other State Museums. In a later letter he wrote that "we will be most appreciative of any contributions of items from members of the Rainbow Division Veterans Association — we are looking for anything and everything for our museum system: uniforms, documents, histories, books, insignia, weapons, accouterments, shoulder patches, helmets, photographs, diaries, just to name a few." So you Engineers who happen to have anything you don't want to leave to your youngsters when you depart this world, write the Colonel and tell him what you have. Be specific. William G. Hamilton, Historical Officer (CAOSP-HO), P. O. Box 214405, 2829 Watt Avenue, Sacramento, CA 95821.

## WW II History



A limited number of reprints of the World War II Rainbow Division History are still available. They are beautifully printed with a white hard-cover and full-color Rainbow on the front. Added to the original printing are the famous, "Trail of the Rainbow" inside the front cover, and a complete list of all Rainbow Memorials and Monuments around the world inside the back cover. Profits from the sale of this history are being donated to the Muskogee Rainbow Memorial.

To obtain your copy (or copies), send \$25.00 or more per copy, PLUS 84¢ per copy ordered for postage, to Hugo Grimm, #1 Community Federal Center, St. Louis, MO 63131.



## Gen. Linden Ailing

Herb Butt received a note from General Linden's son, which says:

"Thank you for the remembrance. My father is now in a nursing home. He is still very alert, but quite deaf without his hearing aid, and his vision is not good. He is confined to a wheelchair but gets around by himself. His mind is clear ( talks with people but they must speak slowly.) If you have any other Rainbow correspondence, send it to: General Henning Lindon, 8963 Colesbury Place, Fairfax, VA 22031, and I'll get it to him.

"Thank you, John Linden."

## Aiding the Chief

At 85 years young, Countryside (IL) resident Paul "Colonel" Haase recently was appointed National Aide-de-Camp to the Commander in Chief of the Veterans of Foreign Wars. Haase, who has been a member of the V.F.W. and the American Legion for 62 years, served in World War I with the 42nd "Rainbow" Division.

Haase enlisted into the Illinois National Guard, Battery "E", 1st Illinois Field Artillery, in 1914, and served with this unit on the Mexican Border in 1916. The Unit was later mustered into the Regular Army and became the 149th F.A., "Rainbow" Division, which served in World War I on eleven battle fronts.

Paul Haase is serving his 5th term as Commander of the Illinois Rainbow Division Veterans Post 3681, V.F.W., and is a charter member of the Rainbow Division Veterans Association.

## Life Membership

A number of people have approached me regarding Life Memberships. The details have not been worked out, but here is how life membership works: The Life Member pays \$100 for his Life Membership. This \$100 goes into a trust fund and the interest from the trust fund pays the dues for him each year. At this time we need at least 100 members. This number will give us \$10,000 which can be invested and will yield at least \$1,000 each year. \$600 of this amount would go to dues and the other \$400 could be reinvested. If anyone wants to comment on the details of this system, please write to me - Dixon Rogers, Rte 3, Box 62, Park Road, Fayette, MO 65248.

## Help for POW's

On August 14, 1981, the President signed Public Law 97-37, known as the "Former Prisoners of War Benefits Act of 1981," expanding VA eligibility for thousands of former prisoners of war. The VA has asked that we collect the following data on as many former POW's as possible: Name, Address and Telephone Number; VA Claim Number and Social Security Number: Whether or not you are presently receiving VA benefits.

If you were a POW, or you know someone who was, mail the above information to: REVEILLE Editor, P. O. Box 2037, Monterey, CA 93940. We must have the information before the end of January, 1982, in order to help you.

## Tulsa Reunion



Shown above is our Tulsa Reunion Hotel and Headquarters, the "Camelot" hotel, located on Skelly Drive beside the Arkansas River. Remember, deadline for reservations is June 20, 1982. Get yours in NOW!

"Take me Back to Tulsa" is President "Buck" Jones theme for the year 1981-82. Reunion dates are July 11 - 14, 1982. Get your reservations and registrations in so that we can plan for our Reunion and have adequate facilities. Let the Reunion Chairman know if any special rooms will be needed for your chapter (at your own expense).

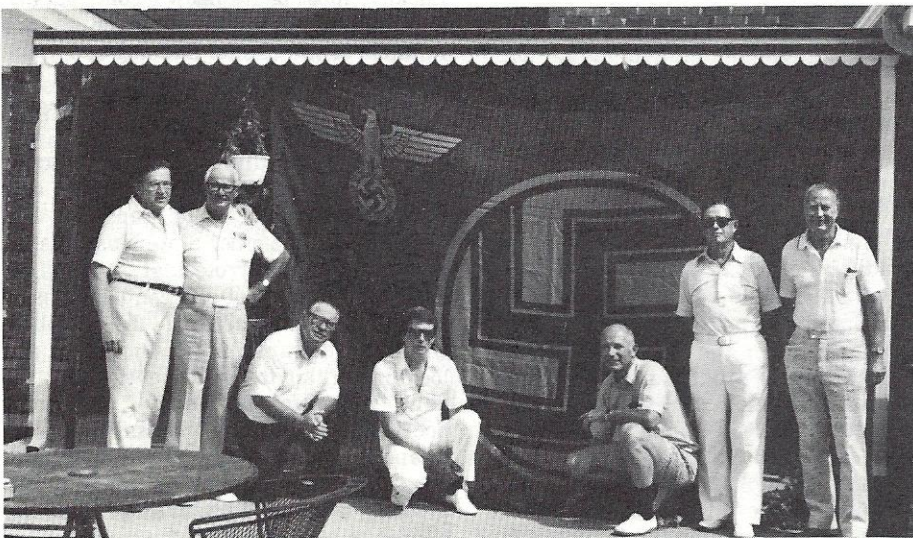
Plans are being formulated for the Memorial Dedication in Muskogee and the other Reunion activities.

Tulsa has many points of interest. If you appreciate art, and especially Indian art, you will want to visit Gilcrease Institute of American History and Art. Philbrook Art Center displays ancient, classical and Indian artwork. A short drive to Claremore and you will visit the Will Rogers Memorial - four galleries and a research library dedicated to Will Rogers. While in Claremore, do not miss the J.M. Davis Gun Museum. Here you will see 20,000 guns and related historical artifacts. In Muskogee you can visit the Five Civilized Tribes Museum (located in Honor Heights). This museum features art, artifacts and a library of Indian culture.

This is your Reunion and we in Tulsa will do everything we can to make it an enjoyable one.

Send your hotel reservations to: The Camelot Hotel, P.O. Box 7609, Tulsa, Oklahoma, 74105. Be sure to enclose a deposit of \$43.00 with your request and inform the hotel you are attending the Rainbow Division Reunion.

Send your registration of \$25.00 per person for the Reunion to: John George, Reunion Chairman, 4941 South Detroit, Tulsa, Oklahoma 74105. And include your unit designation.



On August 15, 1981, the St. Louis Chapter met at Smilie Rohan's home in St. Louis. Pictured above are (L - R) Henry Zickler (H-242); Bob Ground (I-232); Smilie Rohan (M-232); George Calvin (L-222); Hugo E. Grimm (132 Sig Co); James Wright (Hq DivArty); and Earl Greb (E-222). The flag in the picture is Smilie's. He got it in a city called Wurzburg, Germany. It was in the city park and the rope was so high on the pole that he had to shoot the rope in order for the flag to fall. The size of the flag is 7 1/2' x 11'.



## Chapter Totals

ALABAMA	Huntsville	103	53
	Mobile	4	----
	Montgomery	30	22
	Birmingham	20	----
ARIZONA	Phoenix	28	22
CALIFORNIA	Los Angeles	84	50
District of Columbia		25	20
FLORIDA	Clearwater	54	45
	Miami	26	20
	Orlando	23	24
	Pompano Beach	15	11
GEORGIA	Atlanta	13	10
	Macon	12	10
ILLINOIS	Chicago	81	70
	Danville	10	10
INDIANA	Bloomington	6	4
	Indianapolis	32	19
	South Bend	31	28
IOWA	State Assn.	65	100
	Des Moines	110	----
KANSAS	Chanute	17	10
	Dodge City-Pratt	18	10
	Baltimore	23	18
MARYLAND		61	60
MICHIGAN	Detroit	61	60
MINNESOTA	Minn-St. Paul	106	86
MISSOURI	MO-KAN	39	38
	St. Louis	27	----
NEBRASKA	Lincoln	30	14
NEW JERSEY	Red Bank	10	8
NEW YORK	Father Duffy	150	125
OHIO	State Assn.	196	142
OKLAHOMA	Muskogee	27	13
	Oklahoma City	12	6
	Tulsa	41	41
PENNSYLVANIA	Easton	17	4
	Bethlehem	4	----
	Lancaster	25	29
	Philadelphia	22	22
	Reading	39	35
S. CAROLINA	Charleston	17	2
TENNESSEE	Memphis	16	18
TEXAS	Dallas	136	89
VIRGINIA	Richmond	6	6
	Roanoke	7	----
WISCONSIN	Appleton	16	17
	Fond Du Lac	2	----
	Oshkosh	9	----
	122 Med. Bn	51	45
	Med Det Sp Trps	10	10
	142 Combat Engrs	34	29
	222d Infantry	301	335
	M-222 (YANKE)	34	33
	232d Infantry	109	----
	1st Bn	----	42
	2nd Bn	----	33
	3rd Bn	----	31
	242d Infantry	181	124
	Rainbow Artillery	65	79
	42d M. P. Platoon	41	29
	42d Recon Troop	13	13
	Division Band	29	17
	National at Large	66	47
	TOTALS	2,799	2,187

STATEMENT OF OWNERSHIP, MANAGEMENT AND CIRCULATION (Required by 39 U.S.C. 3685)			
1. PUBLICATION The Rainbow Reveille		2. PUBLICATION NO. 4 5 4 - 5 0 0	3. DATE OF FILING 10-29-81
4. FREQUENCY OF ISSUE September, November, January, March, May & June		5. NO. OF ISSUES PUBLISHED ANNUALLY-11	6. ANNUAL SUBSCRIPTION PRICE \$4.00
7. COMPLETE MAILING ADDRESS OF HEADQUARTERS OFFICE OF PUBLICATION (Street, City, County, State and ZIP Code) (Not printing)			
8. COMPLETE MAILING ADDRESS OF THE HEADQUARTERS OF GENERAL BUSINESS OFFICES OF THE PUBLISHERS (Not printing)			
9. FULL NAMES AND COMPLETE MAILING ADDRESSES OF PUBLISHER, EDITOR, AND MANAGING EDITOR (If more than one, list all)			
PUBLISHER (Name and Complete Mailing Address) Hugo L. Grimm, #1 Community Federal Center, St. Louis, MO 63131			
EDITOR (Name and Complete Mailing Address) Martin L. Davis 751 Dry Creek Road, Monterey, CA 93940			
MANAGING EDITOR (Name and Complete Mailing Address) Martin L. Davis 751 Dry Creek Road, Monterey, CA 93940			
10. OWNER (If owned by a corporation, its name and address must be stated and immediately thereunder the names and addresses of stockholders owning or holding 1 percent or more of total amount of stock. If not owned by a corporation, the names and addresses of the individual owners must be given. If owned by a partnership or other unincorporated firm, its name and address, as well as that of each individual must be given. If the publication is published by a corporation or other entity, its name and address must be stated (Not printing)			
FULL NAME		COMPLETE MAILING ADDRESS	
The Rainbow Reveille		#1 Community Federal Center St. Louis, MO 63131	
FULL NAME		COMPLETE MAILING ADDRESS	
None			
11. FOR COMPLETION BY NON-PROFIT ORGANIZATIONS AUTHORIZED TO MAIL AT SPECIAL RATE (Section 413, 39 U.S.C. 3691) The owner, publisher, and managing editor must certify that the publication is published for the purpose of carrying on one or more of the functions specified in section 413, 39 U.S.C. 3691, and that the publication is not published for the purpose of carrying on any other business.			
12. EXTENT AND NATURE OF CIRCULATION a. TOTAL AND GROSS (Not printing)		b. TOTAL AND NET (Not printing)	
c. TOTAL AND NET (Not printing)		d. TOTAL AND NET (Not printing)	
e. TOTAL AND NET (Not printing)		f. TOTAL AND NET (Not printing)	
g. TOTAL AND NET (Not printing)		h. TOTAL AND NET (Not printing)	
i. TOTAL AND NET (Not printing)		j. TOTAL AND NET (Not printing)	
k. TOTAL AND NET (Not printing)		l. TOTAL AND NET (Not printing)	
m. TOTAL AND NET (Not printing)		n. TOTAL AND NET (Not printing)	
o. TOTAL AND NET (Not printing)		p. TOTAL AND NET (Not printing)	
q. TOTAL AND NET (Not printing)		r. TOTAL AND NET (Not printing)	
s. TOTAL AND NET (Not printing)		t. TOTAL AND NET (Not printing)	
u. TOTAL AND NET (Not printing)		v. TOTAL AND NET (Not printing)	
w. TOTAL AND NET (Not printing)		x. TOTAL AND NET (Not printing)	
y. TOTAL AND NET (Not printing)		z. TOTAL AND NET (Not printing)	
aa. TOTAL AND NET (Not printing)		ab. TOTAL AND NET (Not printing)	
ac. TOTAL AND NET (Not printing)		ad. TOTAL AND NET (Not printing)	
ae. TOTAL AND NET (Not printing)		af. TOTAL AND NET (Not printing)	
ag. TOTAL AND NET (Not printing)		ah. TOTAL AND NET (Not printing)	
ai. TOTAL AND NET (Not printing)		aj. TOTAL AND NET (Not printing)	
ak. TOTAL AND NET (Not printing)		al. TOTAL AND NET (Not printing)	
am. TOTAL AND NET (Not printing)		an. TOTAL AND NET (Not printing)	
ao. TOTAL AND NET (Not printing)		ap. TOTAL AND NET (Not printing)	
aq. TOTAL AND NET (Not printing)		ar. TOTAL AND NET (Not printing)	
as. TOTAL AND NET (Not printing)		at. TOTAL AND NET (Not printing)	
au. TOTAL AND NET (Not printing)		av. TOTAL AND NET (Not printing)	
aw. TOTAL AND NET (Not printing)		ax. TOTAL AND NET (Not printing)	
ay. TOTAL AND NET (Not printing)		az. TOTAL AND NET (Not printing)	
ba. TOTAL AND NET (Not printing)		bb. TOTAL AND NET (Not printing)	
bc. TOTAL AND NET (Not printing)		bd. TOTAL AND NET (Not printing)	
be. TOTAL AND NET (Not printing)		bf. TOTAL AND NET (Not printing)	
bg. TOTAL AND NET (Not printing)		bh. TOTAL AND NET (Not printing)	
bi. TOTAL AND NET (Not printing)		bj. TOTAL AND NET (Not printing)	
bk. TOTAL AND NET (Not printing)		bl. TOTAL AND NET (Not printing)	
bm. TOTAL AND NET (Not printing)		bn. TOTAL AND NET (Not printing)	
bo. TOTAL AND NET (Not printing)		bp. TOTAL AND NET (Not printing)	
bq. TOTAL AND NET (Not printing)		br. TOTAL AND NET (Not printing)	
bs. TOTAL AND NET (Not printing)		bt. TOTAL AND NET (Not printing)	
bu. TOTAL AND NET (Not printing)		bv. TOTAL AND NET (Not printing)	
bw. TOTAL AND NET (Not printing)		bx. TOTAL AND NET (Not printing)	
by. TOTAL AND NET (Not printing)		bz. TOTAL AND NET (Not printing)	
ca. TOTAL AND NET (Not printing)		cb. TOTAL AND NET (Not printing)	
cc. TOTAL AND NET (Not printing)		cd. TOTAL AND NET (Not printing)	
ce. TOTAL AND NET (Not printing)		cf. TOTAL AND NET (Not printing)	
cg. TOTAL AND NET (Not printing)		ch. TOTAL AND NET (Not printing)	
ci. TOTAL AND NET (Not printing)		cj. TOTAL AND NET (Not printing)	
ck. TOTAL AND NET (Not printing)		cl. TOTAL AND NET (Not printing)	
cm. TOTAL AND NET (Not printing)		cn. TOTAL AND NET (Not printing)	
co. TOTAL AND NET (Not printing)		cp. TOTAL AND NET (Not printing)	
cq. TOTAL AND NET (Not printing)		cr. TOTAL AND NET (Not printing)	
cs. TOTAL AND NET (Not printing)		ct. TOTAL AND NET (Not printing)	
cu. TOTAL AND NET (Not printing)		cv. TOTAL AND NET (Not printing)	
cv. TOTAL AND NET (Not printing)		cw. TOTAL AND NET (Not printing)	
cw. TOTAL AND NET (Not printing)		cx. TOTAL AND NET (Not printing)	
cx. TOTAL AND NET (Not printing)		cy. TOTAL AND NET (Not printing)	
cy. TOTAL AND NET (Not printing)		cz. TOTAL AND NET (Not printing)	
ca. TOTAL AND NET (Not printing)		cb. TOTAL AND NET (Not printing)	
cb. TOTAL AND NET (Not printing)		cc. TOTAL AND NET (Not printing)	
cc. TOTAL AND NET (Not printing)		cd. TOTAL AND NET (Not printing)	
cd. TOTAL AND NET (Not printing)		ce. TOTAL AND NET (Not printing)	
ce. TOTAL AND NET (Not printing)		cf. TOTAL AND NET (Not printing)	
cf. TOTAL AND NET (Not printing)		cg. TOTAL AND NET (Not printing)	
cg. TOTAL AND NET (Not printing)		ch. TOTAL AND NET (Not printing)	
ch. TOTAL AND NET (Not printing)		ci. TOTAL AND NET (Not printing)	
ci. TOTAL AND NET (Not printing)		cj. TOTAL AND NET (Not printing)	
cj. TOTAL AND NET (Not printing)		ck. TOTAL AND NET (Not printing)	
ck. TOTAL AND NET (Not printing)		cl. TOTAL AND NET (Not printing)	
cl. TOTAL AND NET (Not printing)		cm. TOTAL AND NET (Not printing)	
cm. TOTAL AND NET (Not printing)		cn. TOTAL AND NET (Not printing)	
cn. TOTAL AND NET (Not printing)		co. TOTAL AND NET (Not printing)	
co. TOTAL AND NET (Not printing)		cp. TOTAL AND NET (Not printing)	
cp. TOTAL AND NET (Not printing)		cq. TOTAL AND NET (Not printing)	
cq. TOTAL AND NET (Not printing)		cr. TOTAL AND NET (Not printing)	
cr. TOTAL AND NET (Not printing)		cs. TOTAL AND NET (Not printing)	
cs. TOTAL AND NET (Not printing)		ct. TOTAL AND NET (Not printing)	
ct. TOTAL AND NET (Not printing)		cu. TOTAL AND NET (Not printing)	
cu. TOTAL AND NET (Not printing)		cv. TOTAL AND NET (Not printing)	
cv. TOTAL AND NET (Not printing)		cw. TOTAL AND NET (Not printing)	
cw. TOTAL AND NET (Not printing)		cx. TOTAL AND NET (Not printing)	
cx. TOTAL AND NET (Not printing)		cy. TOTAL AND NET (Not printing)	
cy. TOTAL AND NET (Not printing)		cz. TOTAL AND NET (Not printing)	
ca. TOTAL AND NET (Not printing)		cb. TOTAL AND NET (Not printing)	
cb. TOTAL AND NET (Not printing)		cc. TOTAL AND NET (Not printing)	
cc. TOTAL AND NET (Not printing)		cd. TOTAL AND NET (Not printing)	
cd. TOTAL AND NET (Not printing)		ce. TOTAL AND NET (Not printing)	
ce. TOTAL AND NET (Not printing)		cf. TOTAL AND NET (Not printing)	
cf. TOTAL AND NET (Not printing)		cg. TOTAL AND NET (Not printing)	
cg. TOTAL AND NET (Not printing)		ch. TOTAL AND NET (Not printing)	
ch. TOTAL AND NET (Not printing)		ci. TOTAL AND NET (Not printing)	
ci. TOTAL AND NET (Not printing)		cj. TOTAL AND NET (Not printing)	
cj. TOTAL AND NET (Not printing)		ck. TOTAL AND NET (Not printing)	
ck. TOTAL AND NET (Not printing)		cl. TOTAL AND NET (Not printing)	
cl. TOTAL AND NET (Not printing)		cm. TOTAL AND NET (Not printing)	
cm. TOTAL AND NET (Not printing)		cn. TOTAL AND NET (Not printing)	
cn. TOTAL AND NET (Not printing)		co. TOTAL AND NET (Not printing)	
co. TOTAL AND NET (Not printing)		cp. TOTAL AND NET (Not printing)	
cp. TOTAL AND NET (Not printing)		cq. TOTAL AND NET (Not printing)	
cq. TOTAL AND NET (Not printing)		cr. TOTAL AND NET (Not printing)	
cr. TOTAL AND NET (Not printing)		cs. TOTAL AND NET (Not printing)	
cs. TOTAL AND NET (Not printing)		ct. TOTAL AND NET (Not printing)	
ct. TOTAL AND NET (Not printing)		cu. TOTAL AND NET (Not printing)	
cu. TOTAL AND NET (Not printing)		cv. TOTAL AND NET (Not printing)	
cv. TOTAL AND NET (Not printing)		cw. TOTAL AND NET (Not printing)	
cw. TOTAL AND NET (Not printing)		cx. TOTAL AND NET (Not printing)	
cx. TOTAL AND NET (Not printing)		cy. TOTAL AND NET (Not printing)	
cy. TOTAL AND NET (Not printing)		cz. TOTAL AND NET (Not printing)	
ca. TOTAL AND NET (Not printing)		cb. TOTAL AND NET (Not printing)	
cb. TOTAL AND NET (Not printing)		cc. TOTAL AND NET (Not printing)	
cc. TOTAL AND NET (Not printing)		cd. TOTAL AND NET (Not printing)	
cd. TOTAL AND NET (Not printing)		ce. TOTAL AND NET (Not printing)	
ce. TOTAL AND NET (Not printing)		cf. TOTAL AND NET (Not printing)	
cf. TOTAL AND NET (Not printing)		cg. TOTAL AND NET (Not printing)	
cg. TOTAL AND NET (Not printing)		ch. TOTAL AND NET (Not printing)	
ch. TOTAL AND NET (Not printing)		ci. TOTAL AND NET (Not printing)	
ci. TOTAL AND NET (Not printing)		cj. TOTAL AND NET (Not printing)	
cj. TOTAL AND NET (Not printing)		ck. TOTAL AND NET (Not printing)	
ck. TOTAL AND NET (Not printing)		cl. TOTAL AND NET (Not printing)	
cl. TOTAL AND NET (Not printing)		cm. TOTAL AND NET (Not printing)	
cm. TOTAL AND NET (Not printing)		cn. TOTAL AND NET (Not printing)	
cn. TOTAL AND NET (Not printing)		co. TOTAL AND NET (Not printing)	
co. TOTAL AND NET (Not printing)		cp. TOTAL AND NET (Not printing)	
cp. TOTAL AND NET (Not printing)		cq. TOTAL AND NET (Not printing)	
cq. TOTAL AND NET (Not printing)		cr. TOTAL AND NET (Not printing)	
cr. TOTAL AND NET (Not printing)		cs. TOTAL AND NET (Not printing)	
cs. TOTAL AND NET (Not printing)		ct. TOTAL AND NET (Not printing)	
ct. TOTAL AND NET (Not printing)		cu. TOTAL AND NET (Not printing)	
cu. TOTAL AND NET (Not printing)		cv. TOTAL AND NET (Not printing)	
cv. TOTAL AND NET (Not printing)		cw. TOTAL AND NET (Not printing)	
cw. TOTAL AND NET (Not printing)		cx. TOTAL AND NET (Not printing)	
cx. TOTAL AND NET (Not printing)		cy. TOTAL AND NET (Not printing)	
cy. TOTAL AND NET (Not printing)		cz. TOTAL AND NET (Not printing)	
ca. TOTAL AND NET (Not printing)		cb. TOTAL AND NET (Not printing)	
cb. TOTAL AND NET (Not printing)		cc. TOTAL AND NET (Not printing)	
cc. TOTAL AND NET (Not printing)		cd. TOTAL AND NET (Not printing)	
cd. TOTAL AND NET (Not printing)		ce. TOTAL AND NET (Not printing)	
ce. TOTAL AND NET (Not printing)		cf. TOTAL AND NET (Not printing)	
cf. TOTAL AND NET (Not printing)		cg. TOTAL AND NET (Not printing)	
cg. TOTAL AND NET (Not printing)		ch. TOTAL AND NET (Not printing)	
ch. TOTAL AND NET (Not printing)		ci. TOTAL AND NET (Not printing)	
ci. TOTAL AND NET (Not printing)		cj. TOTAL AND NET (Not printing)	
cj. TOTAL AND NET (Not printing)		ck. TOTAL AND NET (Not printing)	
ck. TOTAL AND NET (Not printing)		cl. TOTAL AND NET (Not printing)	
cl. TOTAL AND NET (Not printing)		cm. TOTAL AND NET (Not printing)	
cm. TOTAL AND NET (Not printing)		cn. TOTAL AND NET (Not printing)	
cn. TOTAL AND NET (Not printing)		co. TOTAL AND NET (Not printing)	
co. TOTAL AND NET (Not printing)		cp. TOTAL AND NET (Not printing)	
cp. TOTAL AND NET (Not printing)		cq. TOTAL AND NET (Not printing)	
cq. TOTAL AND NET (Not printing)		cr. TOTAL AND NET (Not printing)	
cr. TOTAL AND NET (Not printing)		cs. TOTAL AND NET (Not printing)	
cs. TOTAL AND NET (Not printing)		ct. TOTAL AND NET (Not printing)	
ct. TOTAL AND NET (Not printing)		cu. TOTAL AND NET (Not printing)	
cu. TOTAL AND NET (Not printing)		cv. TOTAL AND NET (Not printing)	
cv. TOTAL AND NET (Not printing)		cw. TOTAL AND NET (Not printing)	
cw. TOTAL AND NET (Not printing)		cx. TOTAL AND NET (Not printing)	
cx. TOTAL AND NET (Not printing)		cy. TOTAL AND NET (Not printing)	
cy. TOTAL AND NET (Not printing)		cz. TOTAL AND NET (Not printing)	
ca. TOTAL AND NET (Not printing)		cb. TOTAL AND NET (Not printing)	
cb. TOTAL AND NET (Not printing)		cc. TOTAL AND NET (Not printing)	
cc. TOTAL AND NET (Not printing)		cd. TOTAL AND NET (Not printing)	
cd. TOTAL AND NET (Not printing)		ce. TOTAL AND NET (Not printing)	
ce. TOTAL AND NET (Not printing)		cf. TOTAL AND NET (Not printing)	
cf. TOTAL AND NET (Not printing)		cg. TOTAL AND NET (Not printing)	
cg. TOTAL AND NET (Not printing)		ch. TOTAL AND NET (Not printing)	
ch. TOTAL AND NET (Not printing)		ci. TOTAL AND NET (Not printing)	
ci. TOTAL AND NET (Not printing)		cj. TOTAL AND NET (Not printing)	
cj. TOTAL AND NET (Not printing)		ck. TOTAL AND NET (Not printing)	
ck. TOTAL AND NET (Not printing)		cl. TOTAL AND NET (Not printing)	
cl. TOTAL AND NET (Not printing)		cm. TOTAL AND NET (Not printing)	
cm. TOTAL AND NET (Not printing)		cn. TOTAL AND NET (Not printing)	
cn. TOTAL AND NET (Not printing)		co. TOTAL AND NET (Not printing)	
co. TOTAL AND NET (Not printing)		cp. TOTAL AND NET (Not printing)	
cp. TOTAL AND NET (Not printing)		cq. TOTAL AND NET (Not printing)	
cq. TOTAL AND NET (Not printing)		cr. TOTAL AND NET (Not printing)	
cr. TOTAL AND NET (Not printing)		cs. TOTAL AND NET (Not printing)	
cs. TOTAL AND NET (Not printing)		ct. TOTAL AND NET (Not printing)	
ct. TOTAL AND NET (Not printing)		cu. TOTAL AND NET (Not printing)	
cu. TOTAL AND NET (Not printing)		cv. TOTAL AND NET (Not printing)	
cv. TOTAL AND NET (Not printing)		cw. TOTAL AND NET (Not printing)	
cw. TOTAL AND NET (Not printing)		cx. TOTAL AND NET (Not printing)	
cx. TOTAL AND NET (Not printing)		cy. TOTAL AND NET (Not printing)	
cy. TOTAL AND NET (Not printing)		cz. TOTAL AND NET (Not printing)	
ca. TOTAL AND NET (Not printing)		cb. TOTAL AND NET (Not printing)	
cb. TOTAL AND NET (Not printing)		cc. TOTAL AND NET (Not printing)	
cc. TOTAL AND NET (Not printing)		cd. TOTAL AND NET (Not printing)	
cd. TOTAL AND NET (Not printing)		ce. TOTAL AND NET (Not printing)	
ce. TOTAL AND NET (Not printing)		cf. TOTAL AND NET (Not printing)	
cf. TOTAL AND NET (Not printing)		cg. TOTAL AND NET (Not printing)	
cg. TOTAL AND NET (Not printing)		ch. TOTAL AND NET (Not printing)	
ch. TOTAL AND NET (Not printing)		ci. TOTAL AND NET (Not printing)	
ci. TOTAL AND NET (Not printing)		cj. TOTAL AND NET (Not printing)	
cj. TOTAL AND NET (Not printing)		ck. TOTAL AND NET (Not printing)	
ck. TOTAL AND NET (Not printing)		cl. TOTAL AND NET (Not printing)	
cl. TOTAL AND NET (Not printing)		cm. TOTAL AND NET (Not printing)	
cm. TOTAL AND NET (Not printing)		cn. TOTAL AND NET (Not printing)	
cn. TOTAL AND NET (Not printing)		co. TOTAL AND NET (Not printing)	
co. TOTAL AND NET (Not printing)		cp. TOTAL AND NET (Not printing)	
cp. TOTAL AND NET (Not printing)		cq. TOTAL AND NET (Not printing)	
cq. TOTAL AND NET (Not printing)		cr. TOTAL AND NET (Not printing)	
cr. TOTAL AND NET (Not printing)		cs. TOTAL AND NET (Not printing)	
cs. TOTAL AND NET (Not printing)		ct. TOTAL AND NET (Not printing)	
ct. TOTAL AND NET (Not printing)		cu. TOTAL AND NET (Not printing)	
cu. TOTAL AND NET (Not printing)		cv. TOTAL AND NET (Not printing)	
cv. TOTAL AND NET (Not printing)		cw. TOTAL AND NET (Not printing)	
cw. TOTAL AND NET (Not printing)		cx. TOTAL AND NET (Not printing)	
cx. TOTAL AND NET (Not printing)		cy. TOTAL AND NET (Not printing)	
cy. TOTAL AND NET (Not printing)		cz. TOTAL AND NET (Not printing)	
ca. TOTAL AND NET (Not printing)		cb. TOTAL AND NET (Not printing)	
cb. TOTAL AND NET (Not printing)		cc. TOTAL AND NET (Not printing)	
cc. TOTAL AND NET (Not printing)		cd. TOTAL AND NET (Not printing)	
cd. TOTAL AND NET (Not printing)		ce. TOTAL AND NET (Not printing)	
ce. TOTAL AND NET (Not printing)		cf. TOTAL AND NET (Not printing)	
cf. TOTAL AND NET (Not printing)		cg. TOTAL AND NET (Not printing)	
cg. TOTAL AND NET (Not printing)		ch. TOTAL AND NET (Not printing)	
ch. TOTAL AND NET (Not printing)		ci. TOTAL AND NET (Not printing)	
ci. TOTAL AND NET (Not printing)		cj. TOTAL AND NET (Not printing)	
cj. TOTAL AND NET (Not printing)		ck. TOTAL AND NET (Not printing)	
ck. TOTAL AND NET (Not printing)		cl. TOTAL AND NET (Not printing)	
cl. TOTAL AND NET (Not printing)		cm. TOTAL AND NET (Not printing)	
cm. TOTAL AND NET (Not printing)		cn. TOTAL AND NET (Not printing)	
cn. TOTAL AND NET (Not printing)		co. TOTAL AND NET (Not printing)	
co. TOTAL AND NET (Not printing)		cp. TOTAL AND NET (Not printing)	
cp. TOTAL AND NET (Not printing)		cq. TOTAL AND NET (Not printing)	
cq. TOTAL AND NET (Not printing)		cr. TOTAL AND NET (Not printing)	
cr. TOTAL AND NET (Not printing)		cs. TOTAL AND NET (Not printing)	
cs. TOTAL AND NET (Not printing)		ct. TOTAL AND NET (Not printing)	
ct			